



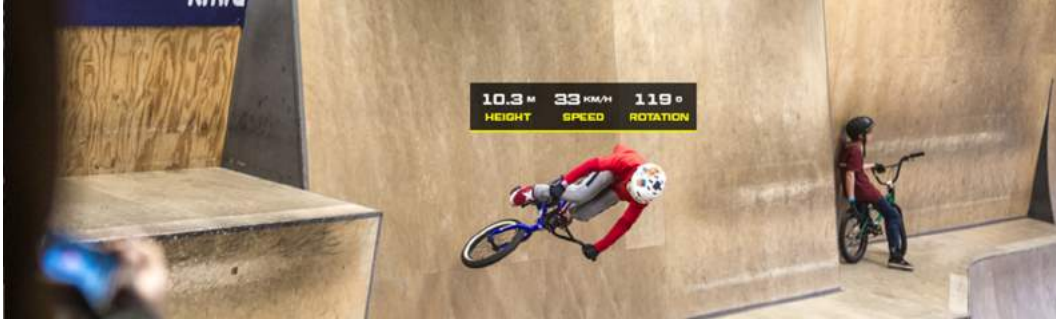
Want to get in touch?

Jimmy@uspc.nl

Powered by



www.uspc.nl



LIVE SPORT DATA IN ACTION SPORTS

The Sport Motion Capture (SMC) is a service that uses an innovative high-end tracking system to return real-time performance data to athletes, coaches, jury members and spectators. Mainly serving as a spectator's engagement tool it provides the visitors an attractive and understandable view of the athlete's performance.

Live engagement options:

- 1) Sport data
- 2) Full heatmap
- 3) 3D models
- 4) Visuals for sponsors, ranking and introductions

System output functionalities:

- 1) Speed
- 2) Height
- 3) Position
- 4) Rotation
- 5) De- & acceleration

System specifications:

- 1) 5-10cm accuracy
- 2) 60 data points each second
- 3) Accurate 2D or 3D positioning
- 4) Plug and play experience
- 5) Unlimited area size
- 6) API for graphics

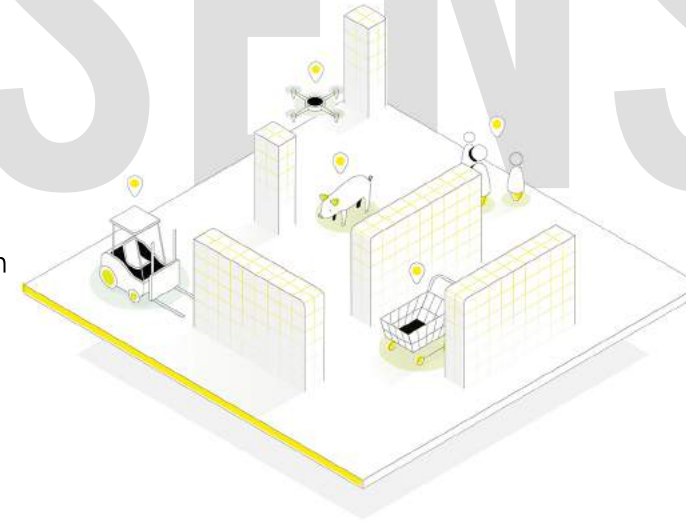
Future: Recognition and visualizing BMX Freestyle and skateboard tricks

TRAINING & JUDGING IN ACTION SPORTS

The SMC can also be used as a judging tool: judging in action sports has a highly subjective character. By giving the judges objective data they can make decisions more deliberately. Secondly, the SMC can be used as a training tool: by visualizing data from the sensor on top of video images, the athletes get a good insight in their current performances and on how they can improve themselves.

LOCATION SYSTEMS IN SPORTS

Real Time Location Systems (RTLS) are rapidly finding their way to the world of sports. The ability to track athletes in real-time with ultra-wideband has already proven to be a game changer for professional teams and has changed how these teams prepare and train.



End of 2018 we used our system at the Dutch National Championship of BMX Freestyle with success. Big investments were made to keep the data as clean and versatile as possible, making it available for usage by technicians and video operators. Be it BMX Freestyle or any other action sport, the system meets those needs:

Performance:

- High Update Rate
- High Precision
- Long Battery Life

Easy to Use

- Daisy-chain Infrastructure
- Pre-filtering Options
- Bulk Recharging

Interoperability

- Pub-sub Protocols (MQTT, OMX, ...)
- Visualization in Unity
- Live TV-graphics